



EVA FLOORS

BRING BEST QUALITY

-Please inspect and approve all products before installation.

-Some products have a high degree of variation, please open several boxes and blend products during installation

-Products are intended for interior installations with temperatures ranging between 15C to 35C.

-Do not install products over carpet, foam underlayment, or in sunrooms, solariums, saunas, seasonal porches, camping trailers, boats or RV's

TOOLS REQUIRED: Utility Knife, Tape Measure, Square, Soft Faced Hammer, Spacers, Tapping Block
DO NOT use foam underlayment under SPC planks

INSTALLATION

1. Inspect all planks for visible defects and damage before and during installation. Do not install damaged planks. We will not accept responsibility for claims on flooring installed with obvious defects. During installation, inspect the groove area of the plank and remove any debris that may prevent proper assembly of planks.
2. Begin laying planks from the left side of the starting wall and work to the right side. The tongue side of the plank should face the starting wall, groove side should face out.
3. Place 5/16" (8.2mm) spacers between the short and long side of the planks and the wall. Always position on spacer between the wall and where the planks' end joints meet (See D2 & D3).
4. The end joints of the planks in the first row are assembled by inserting the tongue side into the groove side of the previously plank at a low angle. Gradually lower the plank down flat until the end joint closes, ensuring that the planks are perfectly aligned. If necessary, use a tapping block and gently tap in the ends to lock in the end joints. Install remaining full planks in first row (See D1).
5. The last plank in the first row will need to be cut. Measure the distance between the wall and the surface of the last full plank. Subtract 5/16" (8.2mm) from this measurement to allow for the spacer. If this measurement is less than 8" (20.3cm), the length of first plank in the row must be cut. This will allow for a longer plank at the end of the row. The first and last plank in each row must be at least 8" (20.3cm) in length. Planks are cut using a sharp utility knife and straight edge/carpenters square. Score the surface of the plank with a utility knife, and then snap the plank at the score line. (D4)
6. The remaining piece cut off from the last plank in the first row may serve as the first plank in the second row provided it is at least 8" (20.3cm) long (See D5). Always stagger end joints from row to row a minimum of 8" (20.3cm).
7. Install the long side of the first plank of the second row. Remember to place a 5/16" (8.2mm) spacer between the wall and the short side of the plank. Insert tongue side into the groove side of the previous row at a low angle and lower flat to the substrate (See D5).
8. Install the second plank in the second row. Position the long side of the plank with the tongue side overlapping the groove of the planks in the previous row approximately 1/8".
9. Angle the end joint into the previous plank. Angle the plank up and gently push forward until the plank locks into the previous row. Continue installing remaining planks into second row. It is important to make sure that the first two rows are straight and square as they can affect the entire installation.
10. The last board in each row should be cut to fit the end of the row, while still maintaining the 5/16" expansion gap at the wall (See D6 & D7). Here's how:
 - 1). Flip the board over (placing the groove to your left).
 - 2). Measure the board to the size of the gap in the row.
 - 3). Mark and cut the board using a miter or table saw.
 - 4). Flip the board over and it will be ready to insert and be tapped into place.
 - 5). You may use the remaining piece to begin the next row.
11. Use a pull bar to lock in the last plank in any row and in the last row of flooring being installed in the room.

Continue working from left to right, row by row. Be sure to maintain 5/16" space around all walls and vertical objects and maintain a random appearance. Offset end joints a minimum of 8" (20.3cm)

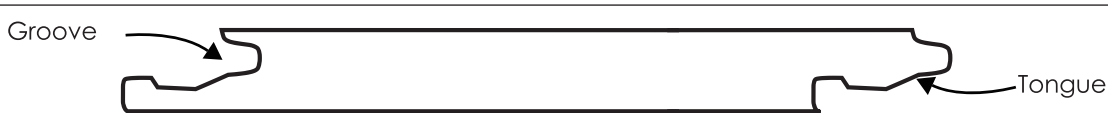
AFTER INSTALLATION

- After all planks have been installed, remove spacers from perimeter of room.
- Install any transition moldings. Do not fasten any moldings through the flooring.
- Pre-drill and install quarter round or baseboard moldings. Molding must be sufficient size to cover the 5/16" (8.2mm) space. Do not fasten moldings through the flooring. Fasten into the wall.
- Use a 1/8" Masonite sheet to cover and protect the top of the flooring when moving heavy furniture or appliances into position.
- Use proper floor protectors under the legs of furniture.
- Post installation temperature MUST be maintained between 15C to 35C (flooring temperature) Relative humidity must be maintained between 40% and 70%

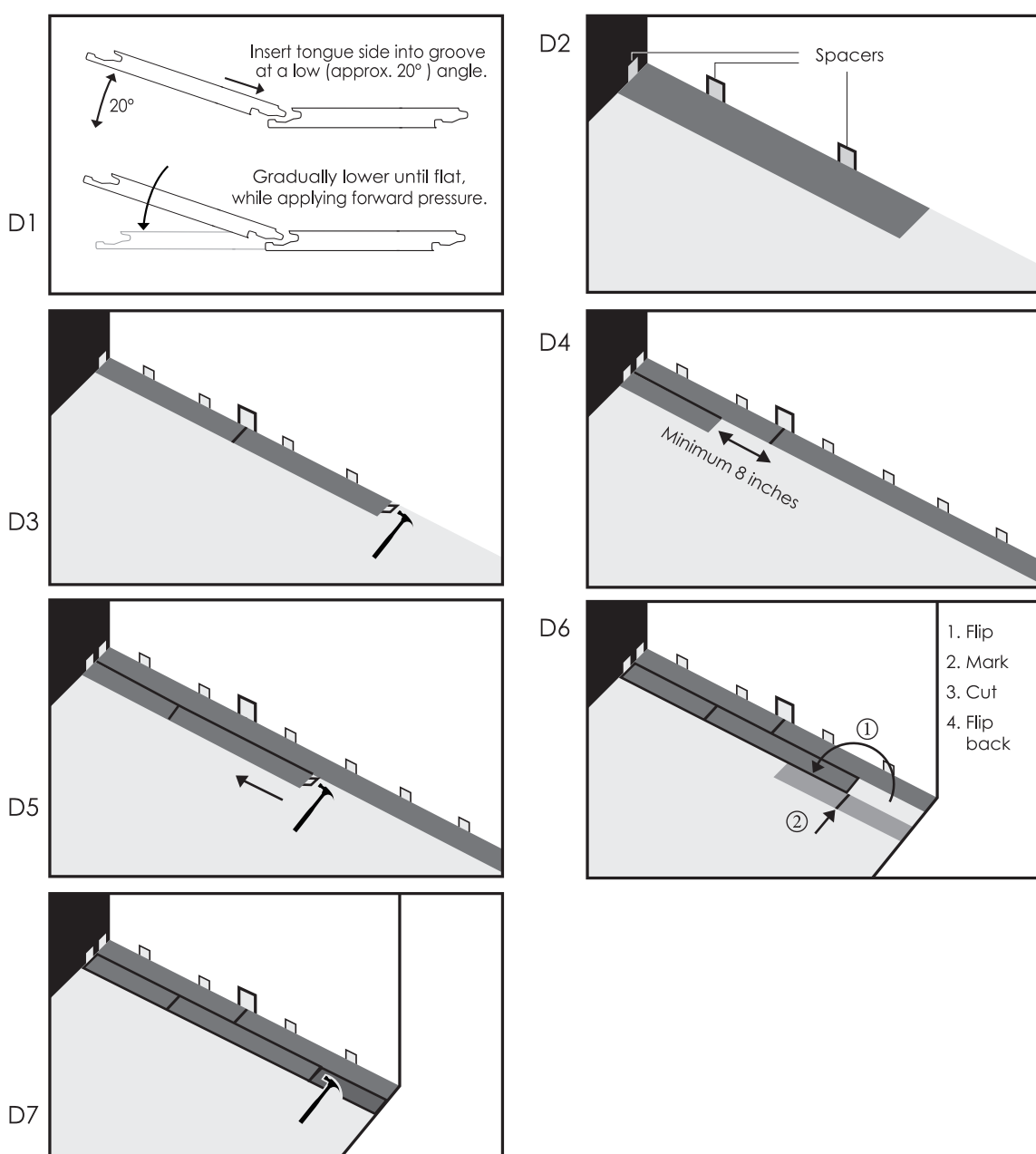
MAINTENANCE AND GENERAL CARE:

- Sweep and vacuum the floor regularly. Use a vacuum designed for hard surfaces (if vacuum has a beater bar, it should be turned off).
- Wipe off any spills with clean water and a damp (not wet) mop. Use a dry mop to remove surplus water and then allow to dry.
- Do not use polishes, waxes, abrasive or ammonia-based cleaners. The surface is dense and non-porous which prevents cleaners from penetrating and this can build up a residue on the surface which will collect dirt. Please check any new cleaning agent on a small test patch of the floor in an inconspicuous area.
- Avoid exposure to direct sunlight for prolonged periods of time. During peak sunlight hours, use drapes or blinds to minimize the direct sunlight on the vinyl flooring. Most types of flooring will be affected by continuous strong sunlight. In addition, excessive temperatures are not good for resilient floors. Long term continuous inside temperatures over 35C combined with strong direct sunlight can damage the flooring and cause the installation to fail.
- If your floor has been exposed to excessive amounts of water due to flooding, do not panic, SPC planks are waterproof. Simply remove the water as quickly as possible. A dehumidifier should be promptly turned on in the room to reduce moisture level back to normal. Do not dry the room below the normal moisture level that existed previously.
- If scuff marks cannot be removed using a damp rag, stubborn scuffs can be removed by the use of a tennis ball or pencil eraser. Gently rub in long direction of plank.
- For Warranty Information please contact and request from Distributor.

HOW TO ASSEMBLE TONGUE AND GROOVE PLANKS



Note: Diagram is for illustration purposes only. The actual design of the tongue and groove of your floor may be different.



www.evafloors.com